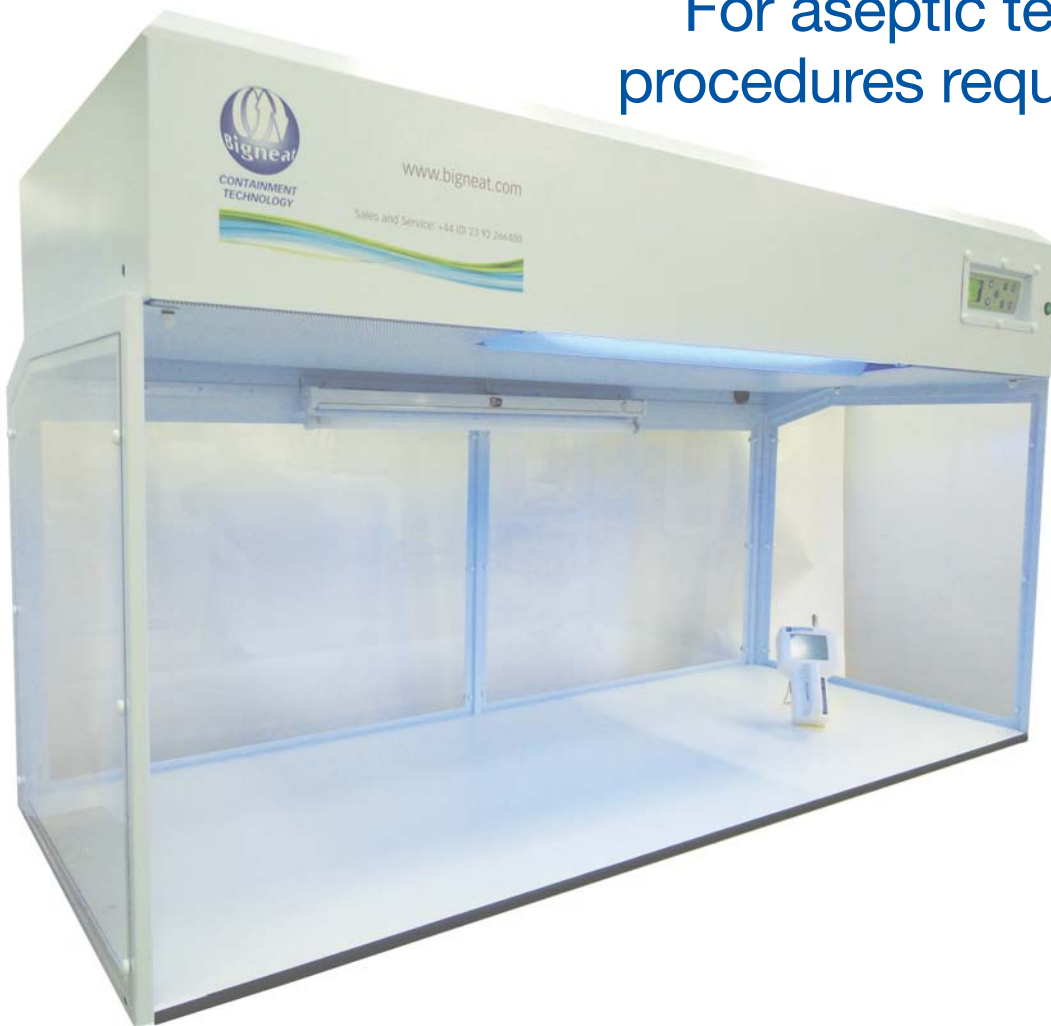


Vertical Laminar Flow Cabinets and Workstations

For aseptic techniques and
procedures requiring clean air

Sample and
process
protection



Email: info@bigneur.com
Tel: +44 (0)23 92 266400

BIGNEAT CONTAINMENT TECHNOLOGY
Value. Service. Experience.



Vertical Laminar Flow Cabinets & Workstations

Bigneat's VLF range of Laminar Flow Cabinets has been specifically designed to be affordable yet to provide particle-free, sterile air conditions to the worksurface at a quality standard usually only possible in more expensive cabinets. Most importantly acrylic construction allows excellent vision.

A VLF cabinet may be positioned on an existing bench or can be supplied as a free standing system with worktop and supporting mobile stand with integrated cupboard.

VLF Laminar Flow Cabinets are built to a very high standard using only the best quality materials and fan components. Experience has shown that VLF Laminar Flow Cabinets give consistent performance which is only dependent on replacement of the pre- and HEPA filters at recommended intervals.

Key Features

- Electronic Touch Button Control Panel incorporating LED Airflow Indicator and Audible and Visual Alarms
- Comfortable to use
- Excellent visibility of working area
- Quiet operation

Description and Operation

Room air is drawn into the top of the cabinet, passes through the pre filter and enters the fan housing. The speed controllable fan pushes the air through the HEPA filter located above the working area. Ultra-clean air exits the HEPA filter producing a sterile working environment which protects the samples and manipulations from external contamination.

The cabinet structure is formed from 10mm thick clear UV stabilised cast-acrylic which provides excellent all-round visibility for the operator whilst carrying out manipulations and aseptic procedures.

Also used in education



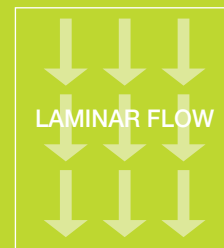
Definition and classification of clean air safety systems as specified by ISO 14644

LAMINAR FLOW CABINET

A dedicated space in which the concentration of airborne particles is controlled and is constructed and used in a manner to minimise the introduction, generation and retention of particles inside the zone.

Laminar Airflow

Airflow moving along parallel flow lines minimises air turbulence within the cabinet.



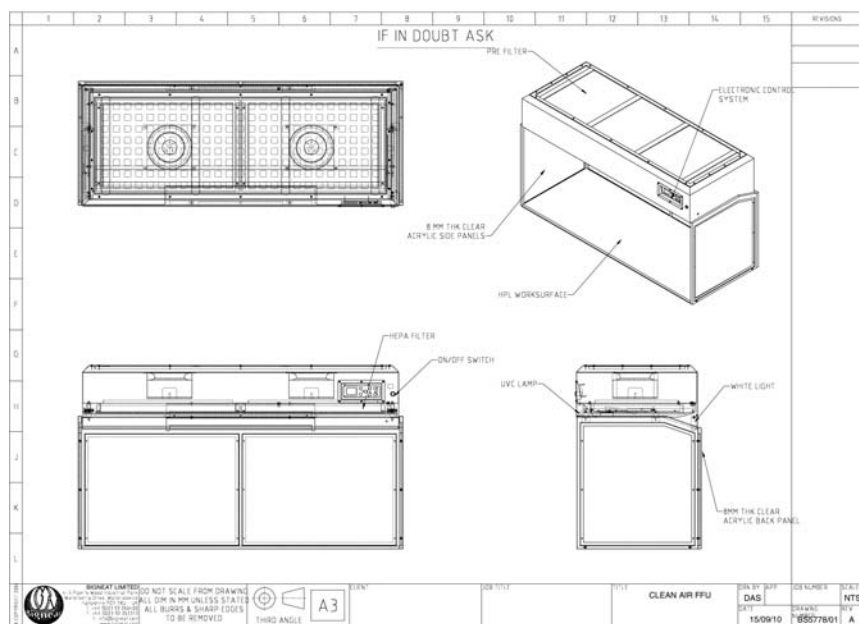
Filtration & Standards

- Pre-filtration eliminates particles 5.0 microns or greater to an efficiency of 92% as defined in BS EN ISO 779.
- HEPA filtration (H14 Standard) eliminates particles 0.3 microns or greater to an efficiency of 99.997% providing ultra-clean particle-free Class 5 BS EN ISO 14644-1:2000 air conditions.
- VLF Laminar Flow Cabinets are manufactured to comply with the guidelines of ISO 14644 – 1:1999 Class 5 (also described as Class 100 or FED STD-209- D:1988), to provide sterile working environment and air velocity at filter face of 0.45 ms⁻¹.

**WORK SAFELY
WITH BIGNEAT**

www.bigneat.com

Typical Layout Details



Construction and Materials

The fan housing is fabricated from mild steel with an epoxy coated, acid resistant white coating. Side panels are manufactured from transparent clear acrylic and the back panel from epoxy coated mild steel. There is also a 150mm deep transparent clear acrylic fixed front visor.

Integrated worksurface is manufactured from laboratory grade solid laminated HPL.



Technical Information

Model	Dimensions mm external wxdxh	Dimensions mm internal wxdxh	Sound Levels	Air Velocity at Filter Face
VLF 1000	1000 x 725 x 1040	966 x 700 x 700	<65dBa	0.45 m/s
VLF 1500	1500 x 725 x 1040	1466 x 700 x 700	<65dBa	0.45 m/s
VLF 2000	2000 x 725 x 1040	1966 x 700 x 700	<65dBa	0.45 m/s

Cabinets available for power supply: 230V, AC, 50Hz, 5Amp, 1Ø and 110V, AC, 60Hz, 8Amp, 1Ø

Static or Mobile Bench



To make your cabinet truly portable, either select a mobile bench with integrated cupboard or an open box section bench (castors/adjusted height).

Alternatively a static stand with levelling/adjustable feet may be selected (an adjustable height electronic model is available).



Technical Information

Part No.	Description	Dimensions mm (external wxdxh)
MTC 1000	Mobile Bench robust epoxy coated mild steel construction, cupboard doors with magnetic catches and lockable 130mm castors.	1000 x 570 x 1145
MTC 1500		1500 x 570 x 1145
MTC 2000		2000 x 570 x 1145

Stand prefix is MT for box section stand, MTA for electronic adjustable height stand.

Optional Extras

STAINLESS STEEL WORKTOP:
304L stainless steel worktop with front spillage lip.

SERVICES KIT:
Static or mobile bench to be supplied with swan neck water tap with drip cup, gas tap and electrical socket. The gas and water supply hoses are fitted with quick release couplings.

SERVICES PORT:
80mm diameter service ports in each side panel for cable and flexible pipe entry.

LIGHTING:
Internal fluorescent white lighting (18W).

UV STERILISATION:
Internal UV sterilisation lighting c/w timer.

www.bigneat.com

Worldwide Representation



More about Bigneat

Bigneat has been designing, manufacturing and maintaining just about every conceivable style of clean air safety cabinet for more than 35 years. Bigneat has grown from a national business to become a company with links worldwide and now enjoys an unrivalled reputation as the world's most innovative supplier in this specialist sector.

In addition to Laminar Flow Cabinets, Bigneat manufactures Chemcap Clearview ductless fume cabinets, fume & dust arm extraction systems, biological safety cabinets, chemical storage systems, controlled environment enclosures & gloveboxes, PCR workstations, powder weighing cabinets and robotics & laboratory automation enclosures.

Bespoke and custom-built cabinets & hoods

If you need a special size cabinet, or require a cabinet or hood to enclose laboratory automation or apparatus, Bigneat should be your first point of contact.

We are happy to quote you for a specially built or adapted product.

On-going product development

BIGNEAT reserves the right to make modification to designs shown within this brochure in line with our policy of continual product improvement.

Quality Assured



Bigneat is accredited to BS EN ISO 9001: 2008.



Bigneat systems are CE marked.

Bigneat manufactures with UL approved components.

Bigneat Limited

4 & 5 Piper's Wood Industrial Park, Waterberry Drive, Waterlooville, Hampshire PO7 7XU UK
Tel: +44 (0)23 92 266400 · Fax: +44 (0)23 92 263373 · E-mail: info@bigneat.com

WORK SAFELY WITH BIGNEAT

Other cabinets & workstations manufactured by Bigneat



Ductless Fume Cabinets for Operator Protection



Bio-safety enclosures for laboratory automation



Controlled environment enclosures

Comprehensive product range supported by a worldwide network of representatives.

Please visit our website for an up-to-date list at:

www.bigneat.com

BIGNEAT CONTAINMENT TECHNOLOGY
Value. Service. Experience.

